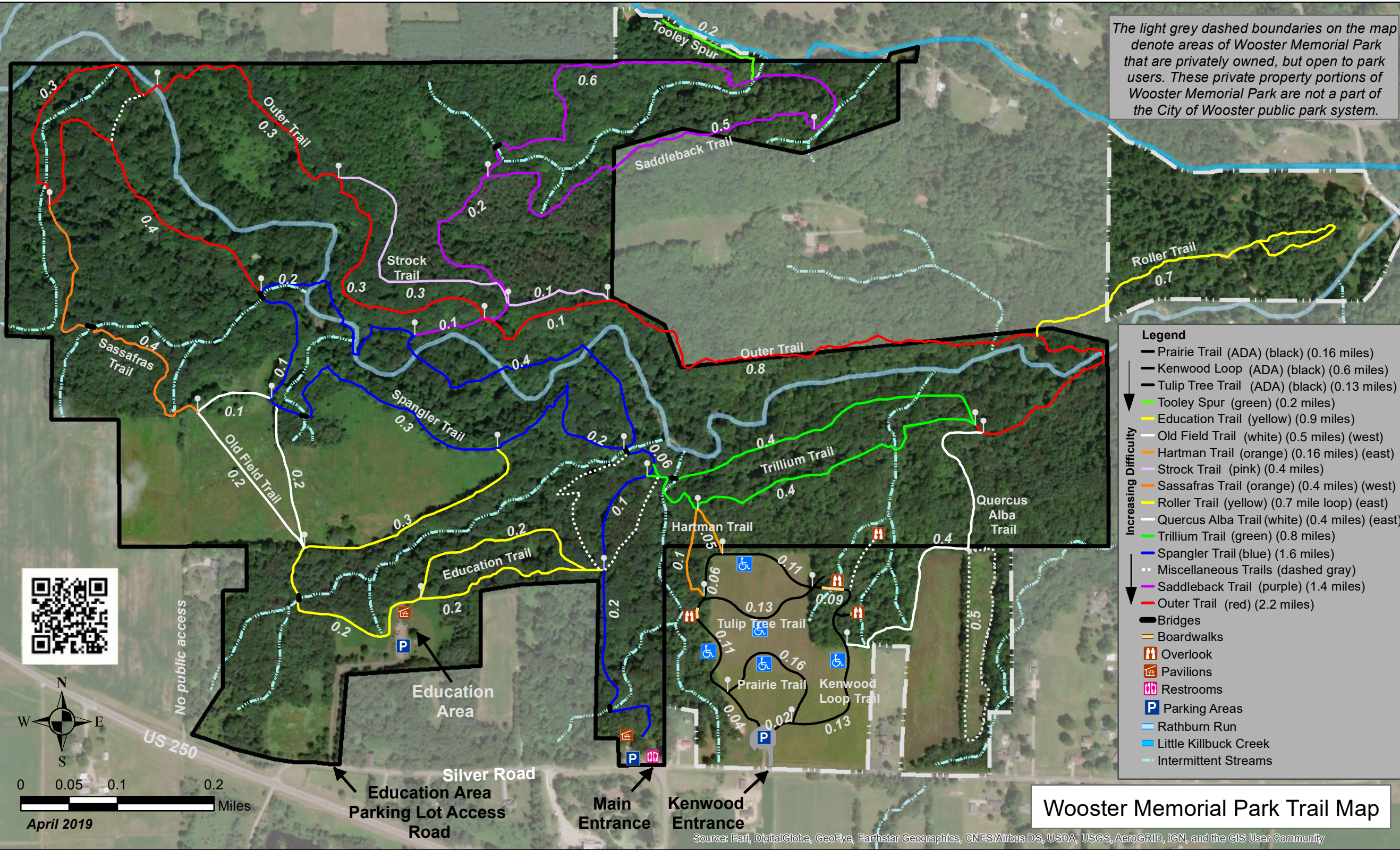
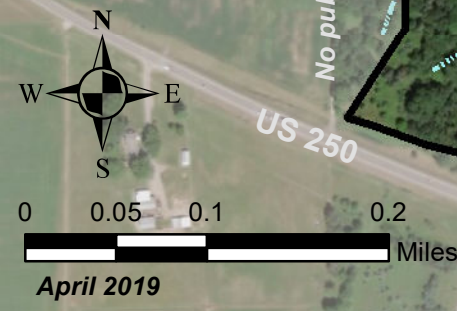


The light grey dashed boundaries on the map denote areas of Wooster Memorial Park that are privately owned, but open to park users. These private property portions of Wooster Memorial Park are not a part of the City of Wooster public park system.

- Legend**
- Prairie Trail (ADA) (black) (0.16 miles)
 - Kenwood Loop (ADA) (black) (0.6 miles)
 - Tulip Tree Trail (ADA) (black) (0.13 miles)
 - Tooley Spur (green) (0.2 miles)
 - Education Trail (yellow) (0.9 miles)
 - Old Field Trail (white) (0.5 miles) (west)
 - Hartman Trail (orange) (0.16 miles) (east)
 - Strock Trail (pink) (0.4 miles)
 - Sassafras Trail (orange) (0.4 miles) (west)
 - Roller Trail (yellow) (0.7 mile loop) (east)
 - Quercus Alba Trail (white) (0.4 miles) (east)
 - Trillium Trail (green) (0.8 miles)
 - Spangler Trail (blue) (1.6 miles)
 - Miscellaneous Trails (dashed gray)
 - Saddleback Trail (purple) (1.4 miles)
 - Outer Trail (red) (2.2 miles)
 - Bridges
 - Boardwalks
 - Overlook
 - Pavilions
 - Restrooms
 - Parking Areas
 - Rathburn Run
 - Little Killbuck Creek
 - Intermittent Streams



Wooster Memorial Park Trail Map

Source: Esri, DigitalGlobe, GeoEye, Earthstar Geographics, CNES/Airbus DS, USDA, USGS, AeroGRID, IGN, and the GIS User Community